

SAFETY WORK is always our first priority

AN TOÀN LAO ĐỘNG là ưu tiên hàng đầu

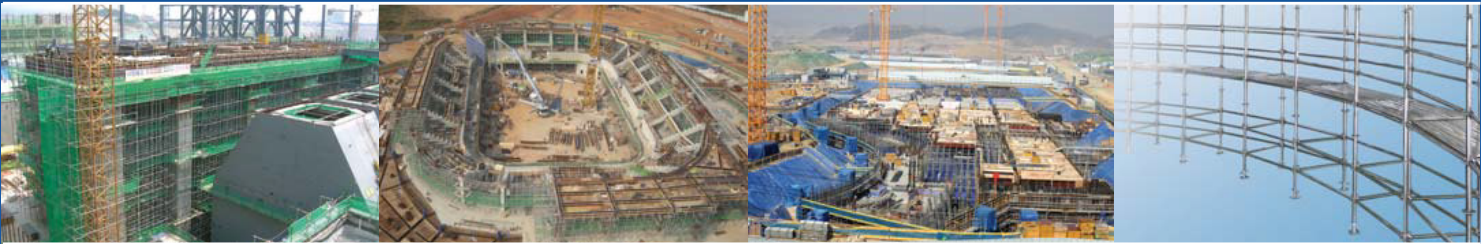


**KL VINA
SCRAFOLD**



HOTLINE:
Hà Nội: 0934.650.886
Hồ Chí Minh: 0917.453.288

WEBSITE: www.klvina.com





INDEX

SYSTEM SUPPORT / 시스템 서포트

- 4 S-1000
- 8 S-2000 / S-3000

SYSTEM SCAFFOLDING / 시스템 비계

- 12 S-4000
- 14 ROUND SCAFFOLDING / 원형비계
- 18 PLANK / 안전발판
- 20 WALKING TOWER / 워킹타워

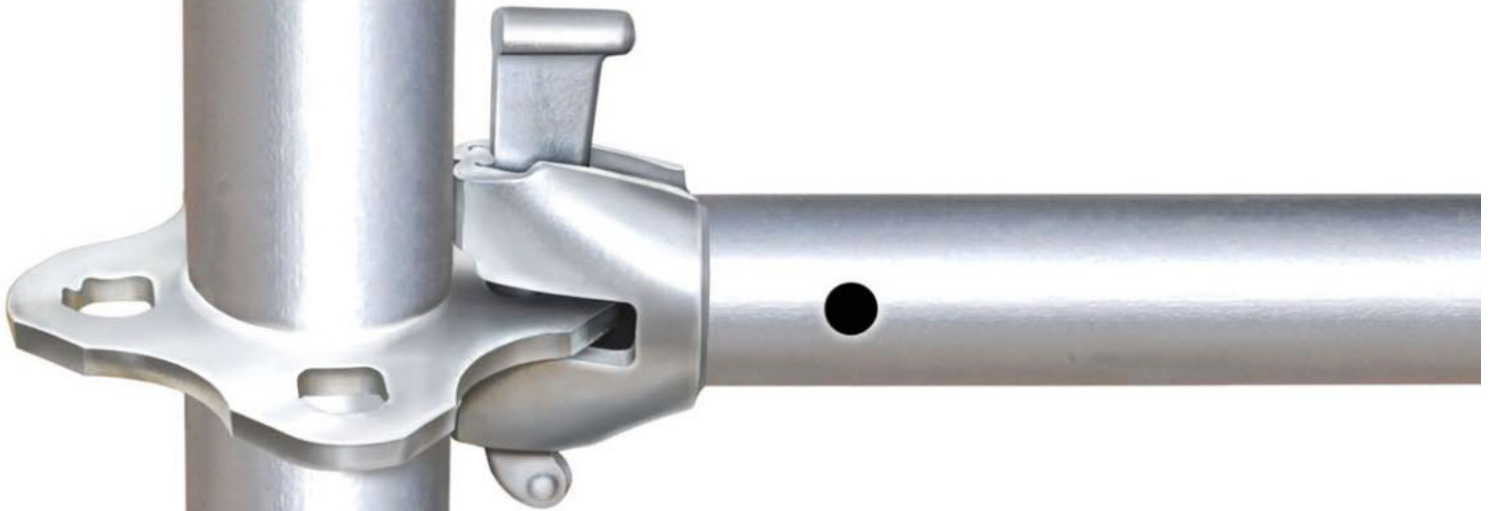
- 24 PIPE SUPPORT / 파이프 서포트
- 26 FRAME SCAFFOLDING / 조립식 비계
- 28 HORY BEAM / 호리빔
- 30 Patents & Certificates / 특허 및 인증서

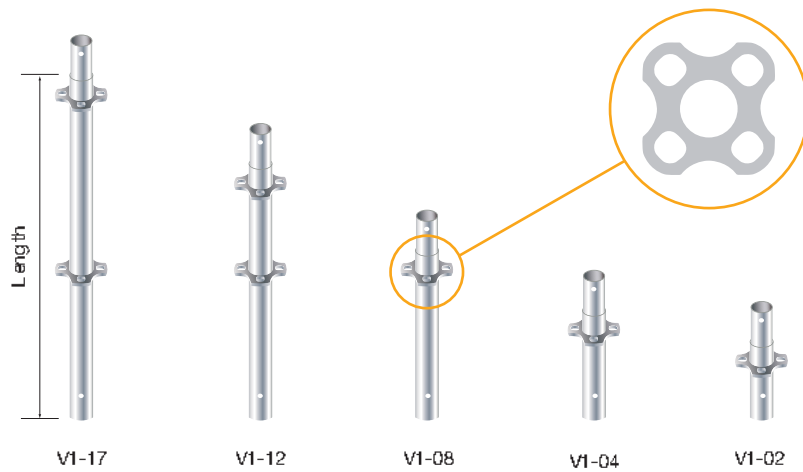
SYSTEM SUPPORT

S-1000

We guarantee more safe construction environment by using horizontal materials with double fastening system.

수평재의 이중 체결방식으로 안전한 시공을 보장합니다.





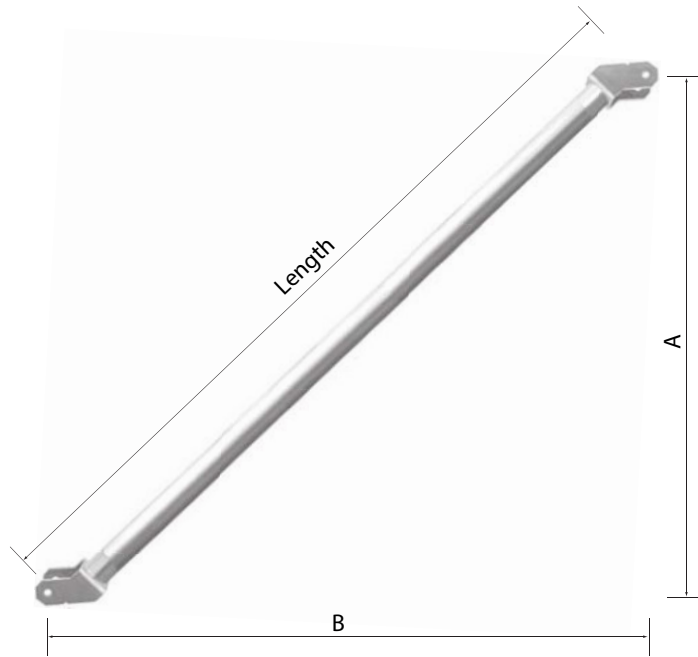
■ VERTICAL

Model	Length (mm)	Weight (kg)
V1-02	216	2,0
V1-04	432	3,0
V1-08	863	4,4
V1-12	1,291	6,2
V1-17	1,725	8,3



■ HORIZONTAL

Model	Length (mm)	Center distance (mm)	Weight (kg)
H1-03	244	305	1,3
H1-06	549	610	2,1
H1-09	853	914	2,8
H1-12	1,158	1,219	3,5
H1-15	1,463	1,524	4,3
H1-18	1,768	1,829	5,0



■ BRACING

Model	Length (mm)	A (mm)	B (mm)	Weight (kg)
B1-1718	2,332	1,725	1,829	5,8
B1-1715	2,139	1,725	1,524	5,3
B1-1712	1,974	1,725	1,219	5,0
B1-1709	1,845	1,725	914	4,7
B1-1218	2,032	1,291	1,829	5,0
B1-1212	1,609	1,291	1,219	4,2
B1-1209	1,447,5	1,291	914	3,8



■ HEAD BASE

Model	Length (mm)	Weight (kg)
H1-456	600	5,3



■ JACK BASE

Model	Length (mm)	Weight (kg)
J1-456	600	4,8



▲ Singori nuclear power plant, Korea. / 신고리원자력발전소



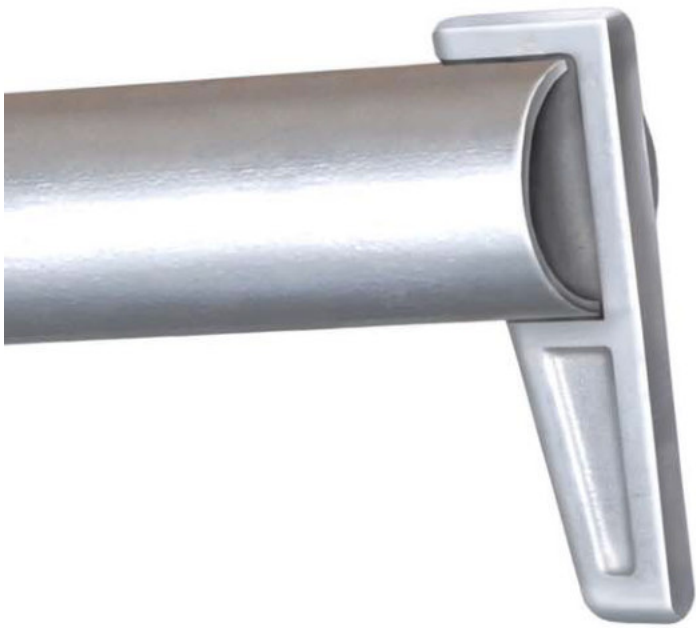
■ TRUSS

Model	Length (mm)	Centerdistance (mm)	Weight (kg)
T1-15	1,585	1,524	18



■ Yoke

Model	Length (mm)	Dimensions(mm)	Weight (kg)
Y1-10	1,000	75×125×3,2t	8,85
Y1-15	1,500	75×125×3,2t	13,28
Y1-20	2,000	75×125×3,2t	17,70



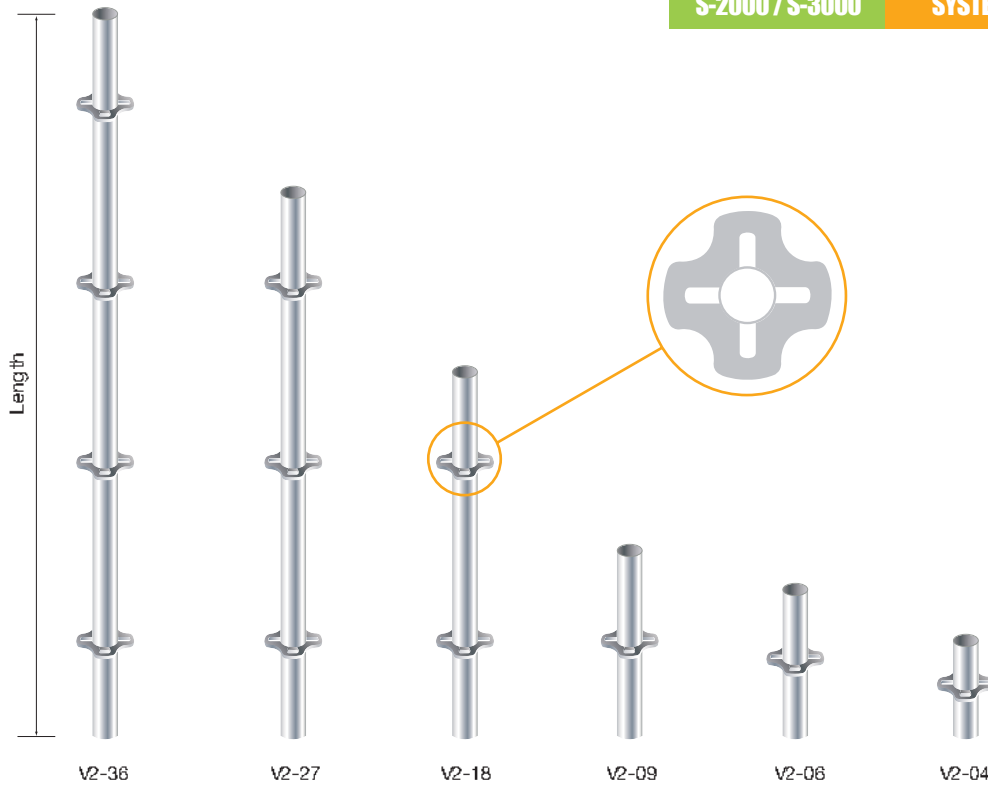
SYSTEM SUPPORT

S-2000

S-3000

With wedge fastening system, you can disassemble and reassemble products with ease and quickness.

뿔기 형태의 체결방식으로 신속한 설치, 해체가 가능합니다.



■ S-2000 VERTICAL : $\varnothing 48,6$

Model	Length (mm)	Weight (kg)
V2-04	450	1,5
V2-06	600	1,9
V2-09	900	2,6
V2-18	1,800	5,3
V2-27	2,700	8,0
V2-36	3,600	10,8

■ S-3000 VERTICAL : $\varnothing 60,5$

Model	Length (mm)	Weight (kg)
V3-04	450	2,5
V3-06	600	3,0
V3-09	900	4,3
V3-18	1,800	8,6
V3-27	2,700	13,0
V3-36	3,600	17,5



■ HORIZONTAL

Model	Length (mm)	Center distance (mm)	Weight (kg)
H2-04	401	450	1,4
H2-06	551	600	1,8
H2-09	865	914	2,6
H2-12	1,151	1,200	3,4
H2-15	1,451	1,500	4,1
H2-18	1,780	1,829	5,0



■ HEAD BASE : Ø48.6

Model	Length (mm)	Weight (kg)
H2-424	450	3,7
H2-426	600	5,1
H2-429	900	6,2



■ JACK BASE : Ø48.6

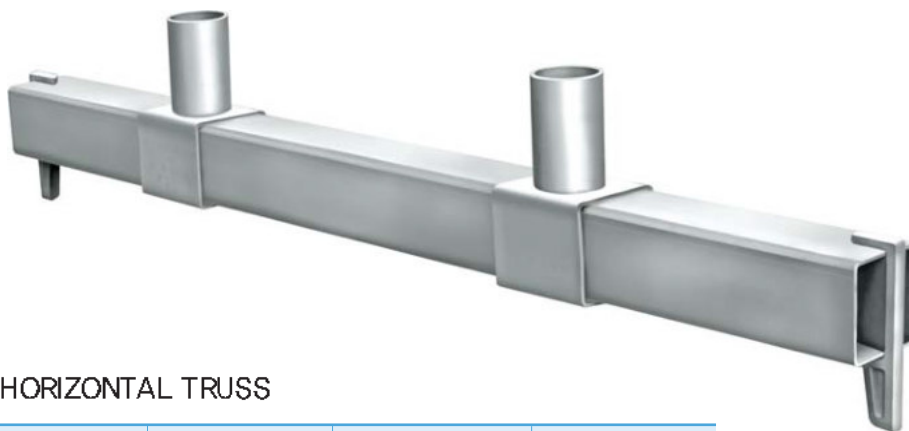
Model	Length (mm)	Weight (kg)
J2-424	450	3,4
J2-426	600	3,9
J2-429	900	5,2

■ HEAD BASE : Ø60.5

Model	Length (mm)	Weight (kg)
H3-526	600	5,5

■ JACK BASE : Ø60.5

Model	Length (mm)	Weight (kg)
J3-526	600	5,0



■ HORIZONTAL TRUSS

Model	Length (mm)	Center distance (mm)	Weight (kg)
T2-12	1,151	1,200	10,4



▲ Hwaseong Sports Stadium, Korea / 화성경기장



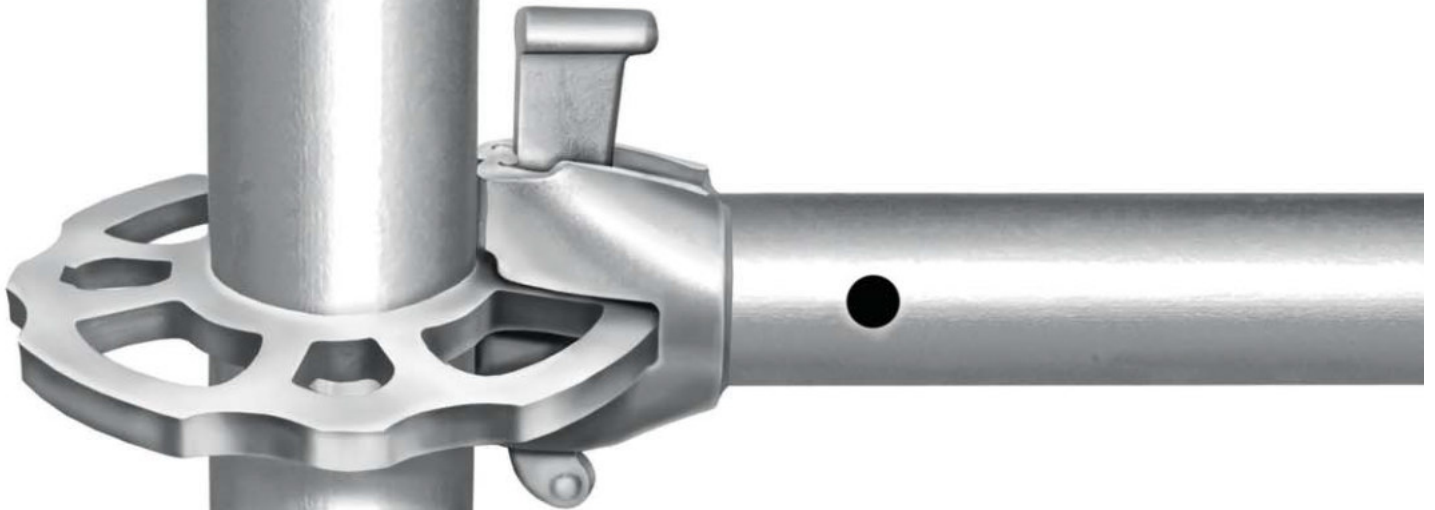
▲ Sejong city Integrated Government Building, Korea / 세종시 정부종합청사

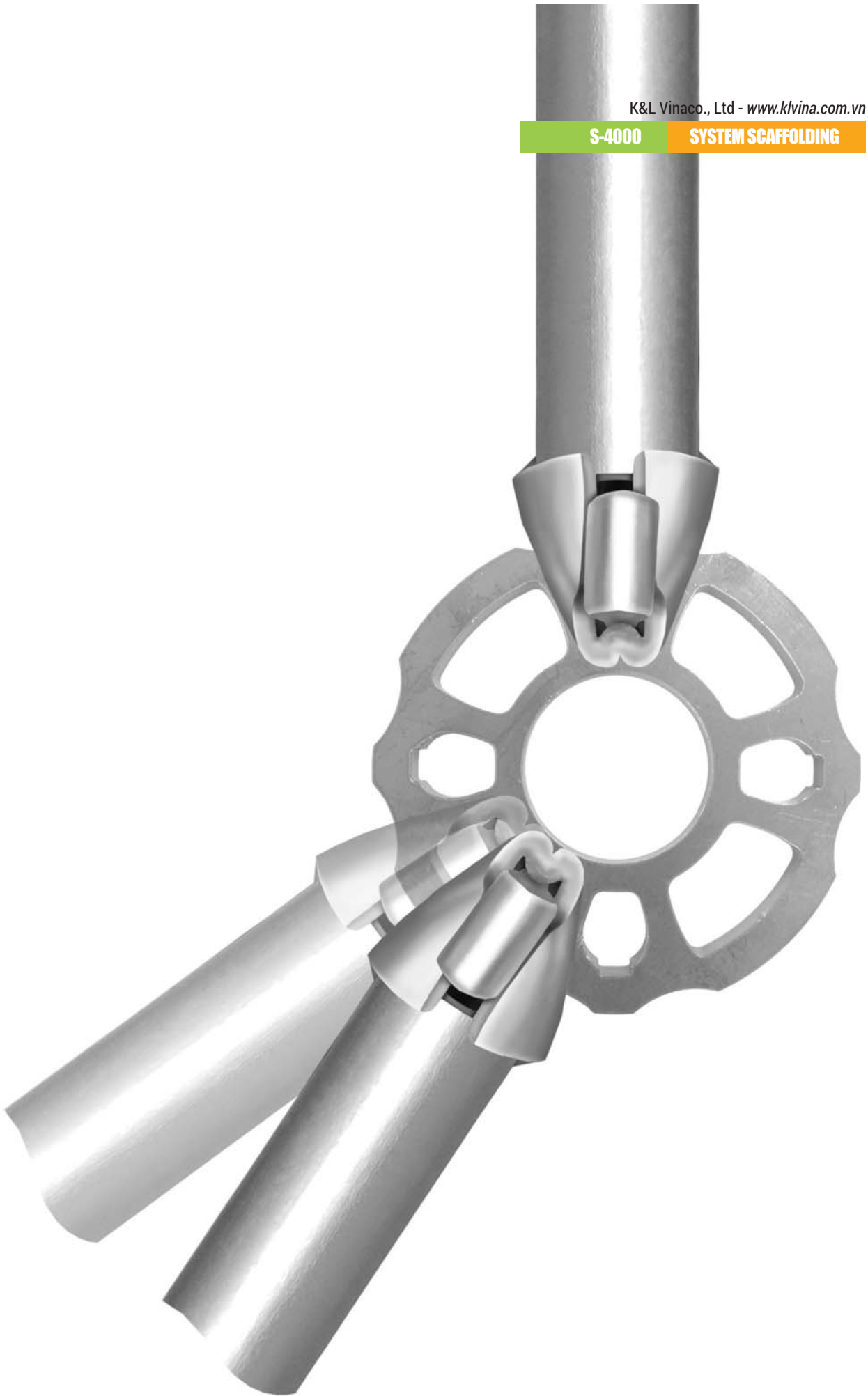
SYSTEM SCAFFOLDING

S-4000

It can be applied to various rotation angles and can also be easily adjusted.

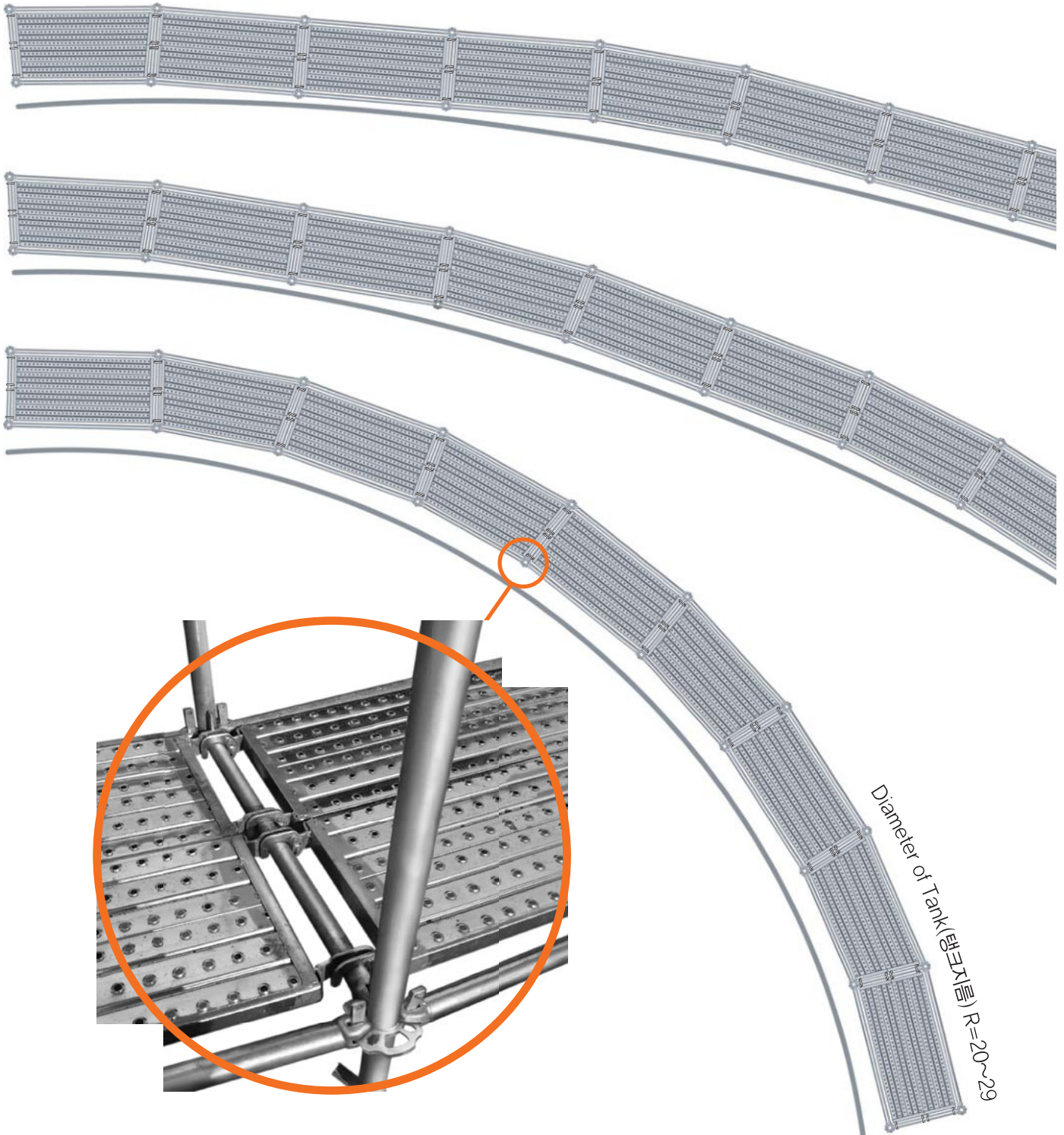
다양한 회전 각도에 적용 가능하고 조절을 손쉽게 할 수 있습니다.





원형 비계

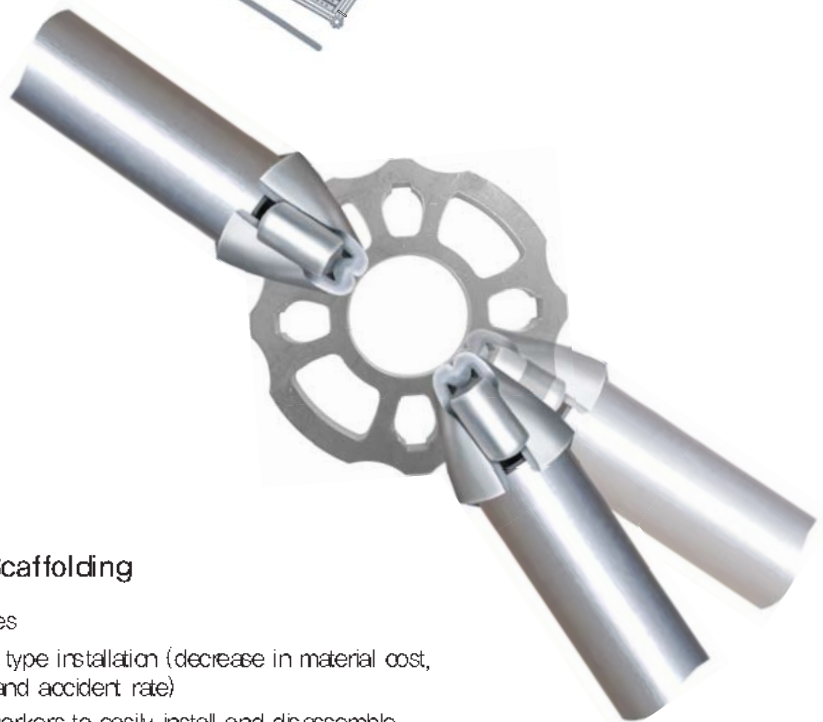
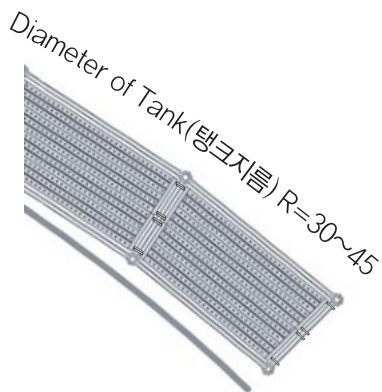
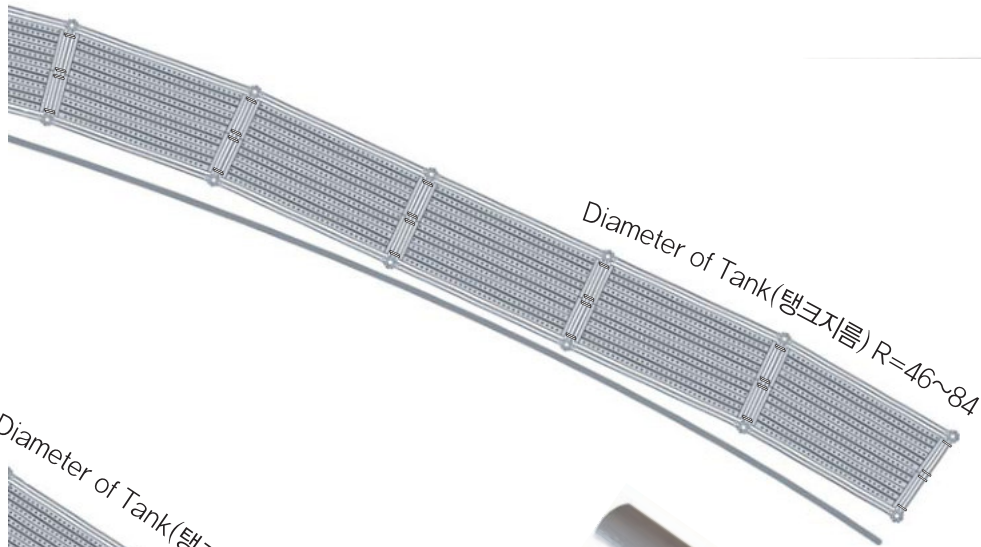
ROUND SCAFFOLDING





■ 원형 비계의 장점

- 다양한 회전 각도에 적용 가능
- 수직재 설치물량 감소(자재비, 인건비, 운반비, 사고율 감소)
- 작업자에게 익숙한 수평재 사용으로 설치, 해체 용이

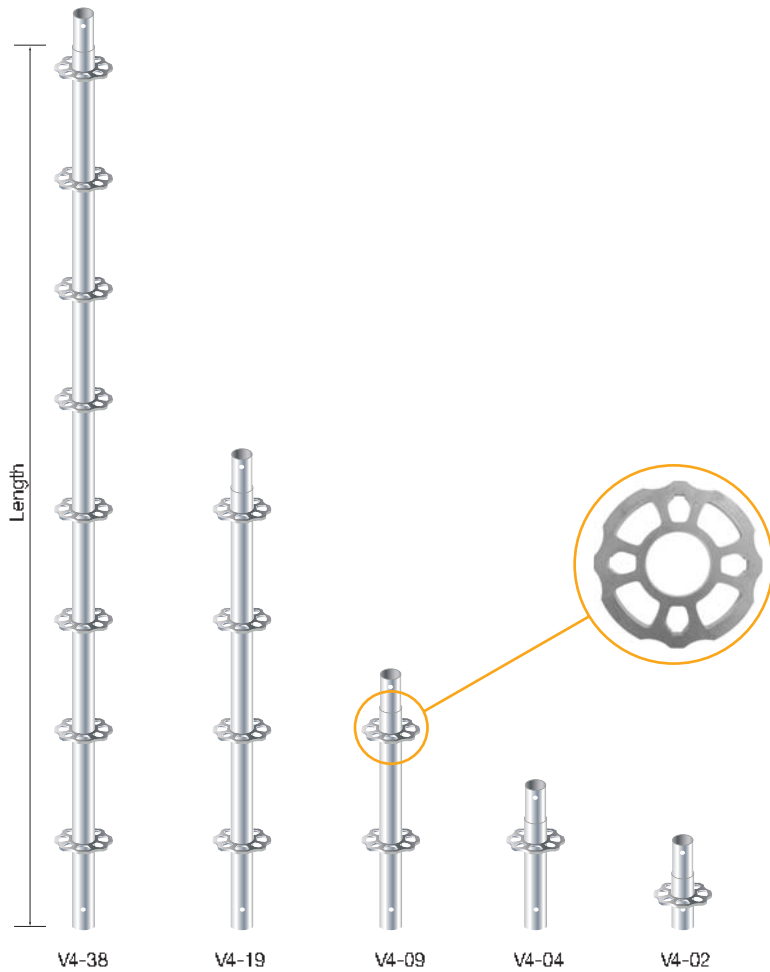


■ Advantages of Round Scaffolding

- Apply to various rotation angles
- Decrease in quantity of vertical type installation (decrease in material cost, labor cost, transportation cost and accident rate)
- Use of horizontal type allows workers to easily install and disassemble

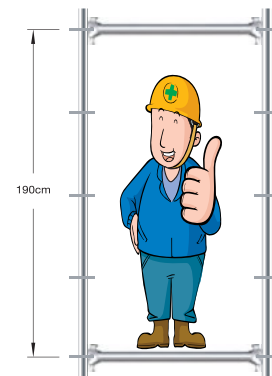
SYSTEM SCAFFOLDING

Member List



■ VERTICAL

Model	Length (mm)	Weight (kg)
V4-02	237	1,7
V4-04	475	2,3
V4-09	950	4,3
V4-19	1,900	8,3
V4-38	3,800	15,7



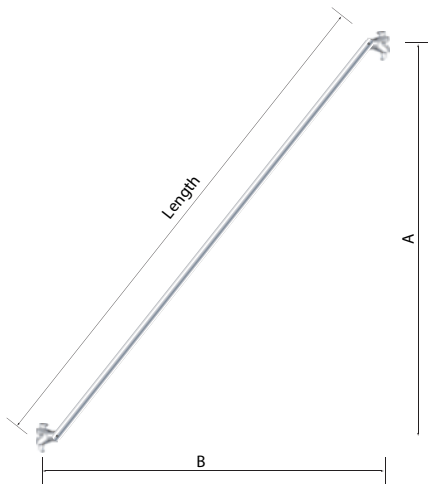
Wider working space

- **Internal height**
Vertical single section 190cm – Plank 5cm = 185cm
- **Worker**
Average height(167cm) + Safety shoes(3cm) + Safety helmet(5cm) = 175cm
- **Marginal height**
= 10cm

■ HORIZONTAL

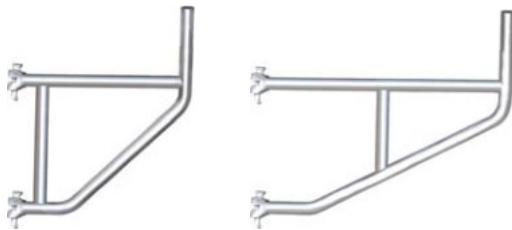


Model	Length (mm)	Center distance (mm)	Weight (kg)
H1-03	244	305	1,3
H1-06	549	610	2,1
H1-09	853	914	2,8
H1-12	1,158	1,219	3,5
H1-15	1,463	1,524	4,3
H1-18	1,768	1,829	5,0



■ BRACING

Model	Length (mm)	A (mm)	B (mm)	Weight (kg)
B4-1819	2,478	1,900	1,829	7,6



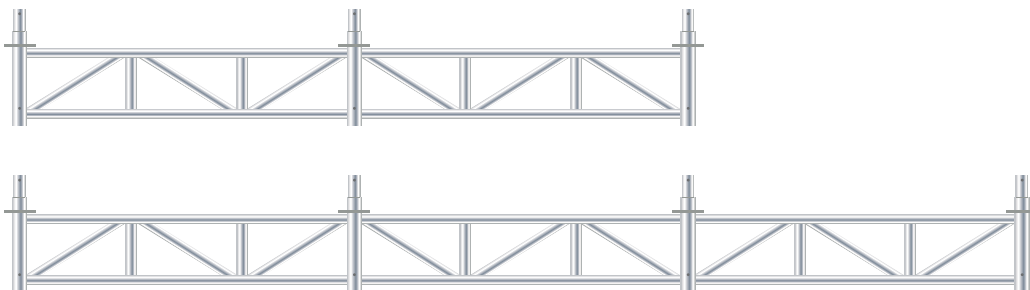
■ BRACKET

Model	Length (mm)	Weight (kg)
BK-06	610	5,5
BK-09	914	6,8



■ WALL TIE

Model	Length (mm)
WT-04	400
WT-06	600

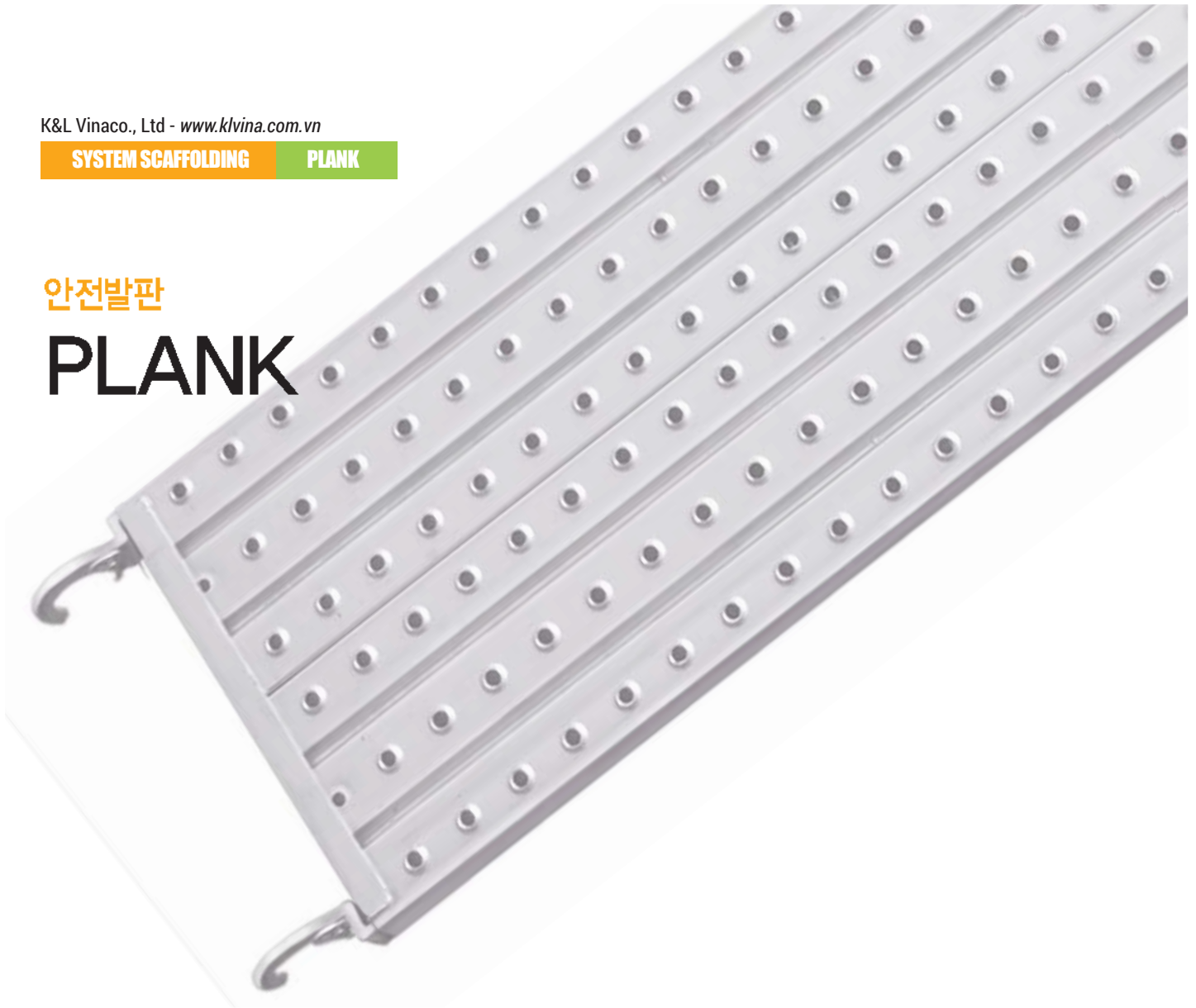


■ TRUSS

Model	Length (mm)	Center distance (mm)	Weight (kg)
T4-36	3,794	3,658	28,0
T4-54	5,623	5,487	40,0

안전발판

PLANK



■ STAIRWAY

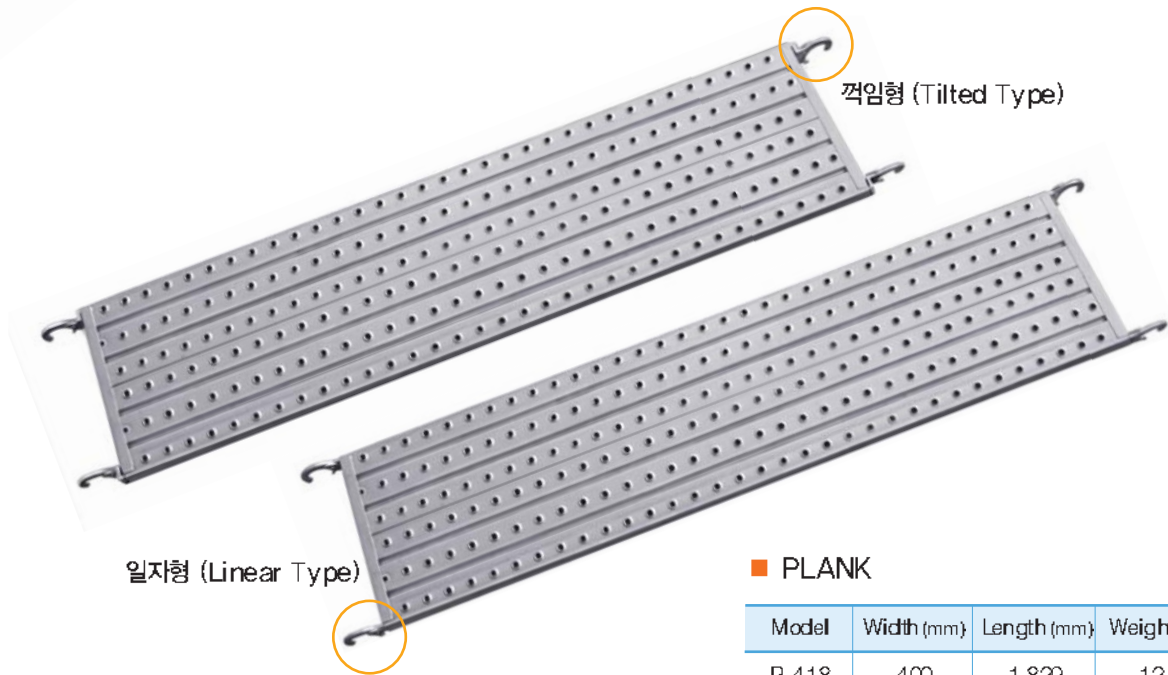
일체형 (Integral Type)



조립형 (Built-up Type)



고정된 반이판의 홈에 발판을 끼워 조립
Assemble by putting a foothold into
the fixed loading board.



일자형 (Linear Type)

꺾임형 (Tilted Type)

■ PLANK

Model	Width (mm)	Length (mm)	Weight (kg)
P-418	400	1,829	12,3
P-412	400	1,219	7,9
P-409	400	914	6,4



▲ Setting up TRUSS and ascending & descending makeshift stairs. / 트러스, 승강계단 설치

워킹 타워

WALKING TOWER

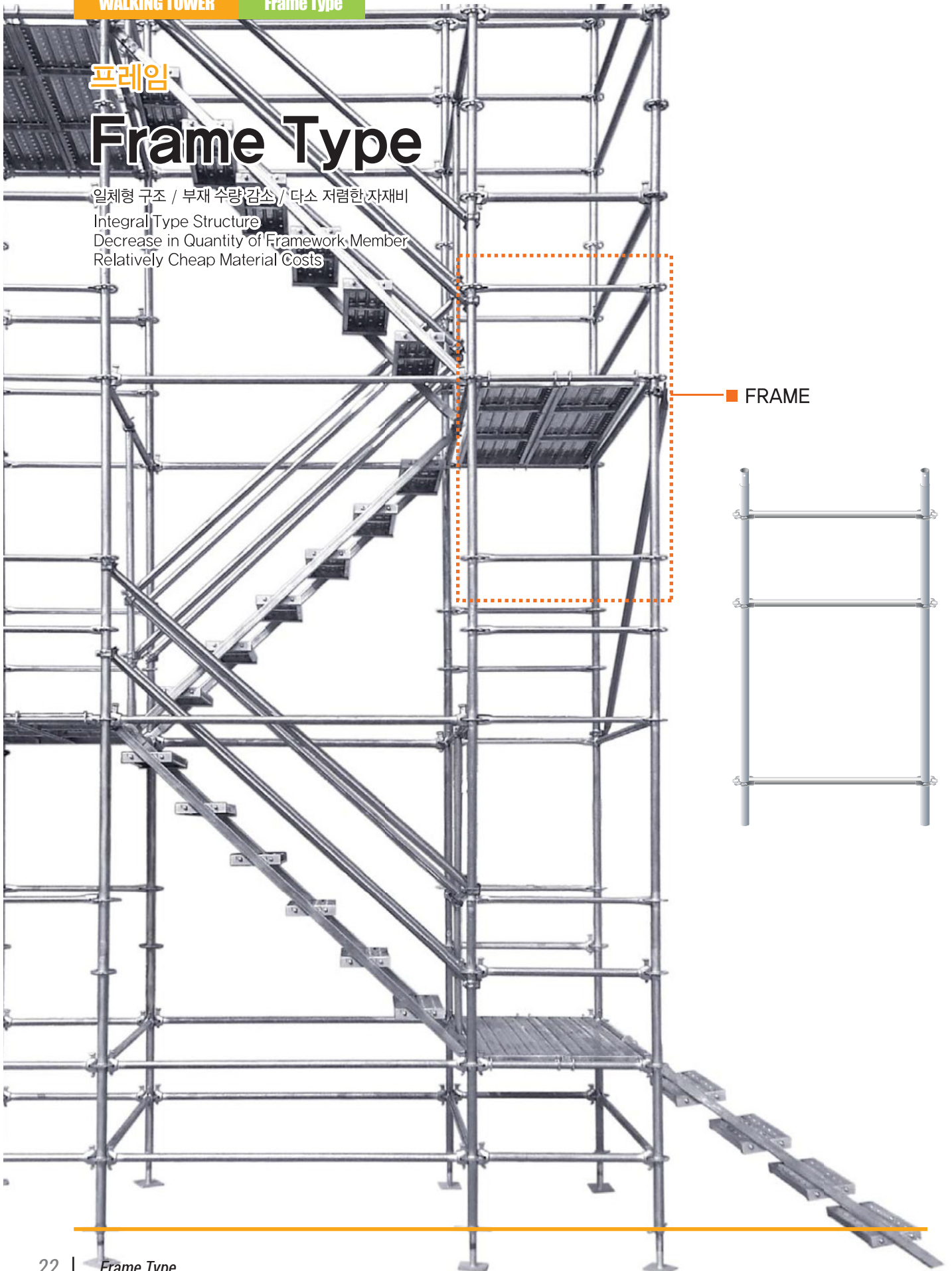




프레임

Frame Type

일체형 구조 / 부재 수량 감소 / 다소 저렴한 자재비
Integral Type Structure
Decrease in Quantity of Framework Member
Relatively Cheap Material Costs



Vertical Type

WALKING TOWER

수직재

Vertical Type

라운드 비계 자재와 호환 / 부재 종류 감소 / 시공 방법 단순화

Compatible with Round Scaffolding Materials

Decrease in types of Framework Member

Simplification of Construction Method

■ VERTICAL



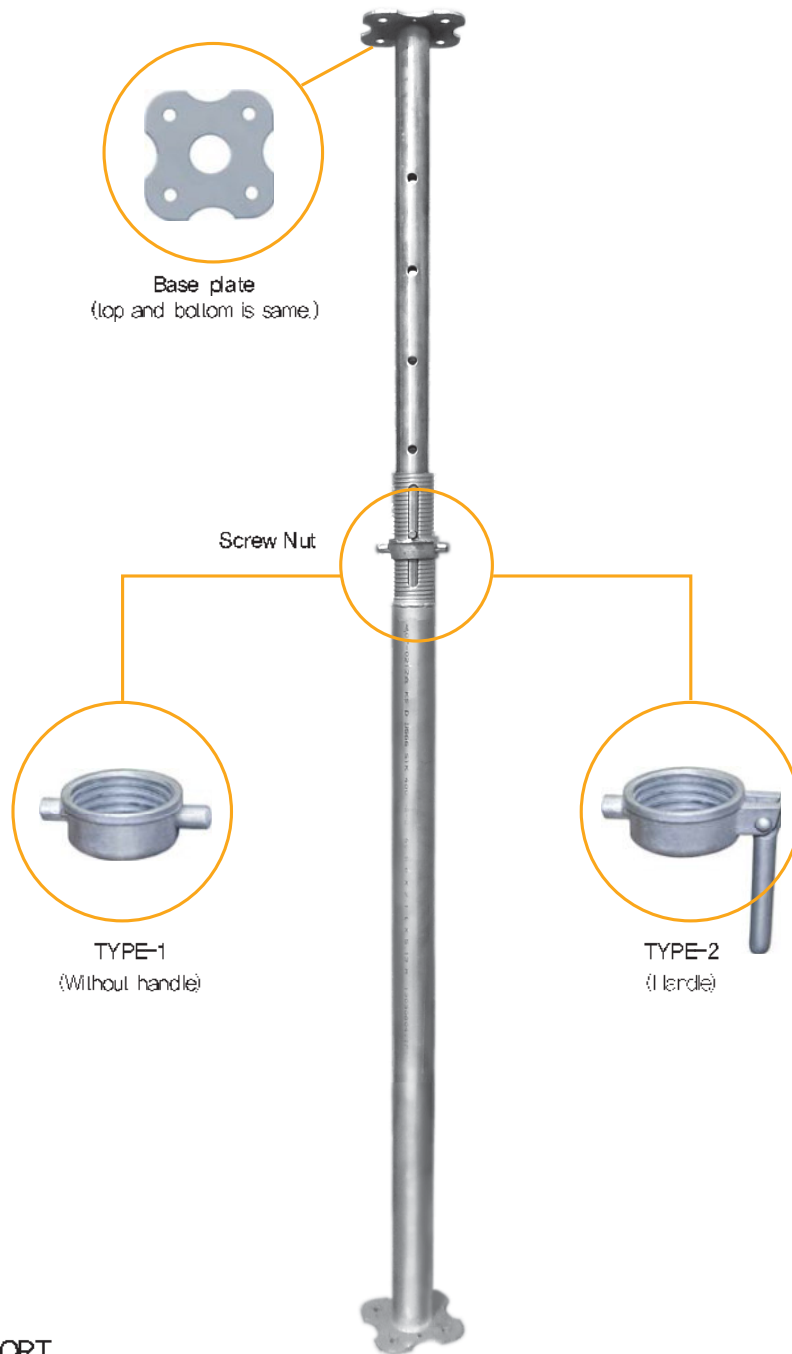
파이프 서포트

PIPE SUPPORT

It gives you the best competitiveness when applied to structures with their height lower than 4.2 meters.

4.2m 이하의 낮은 구조물에 가장 높은 경쟁력을 제공해 드립니다.





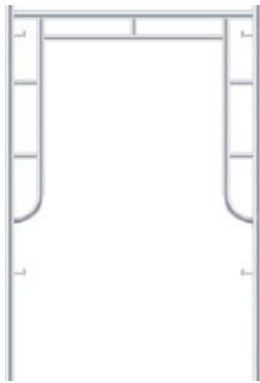
■ PIPE SUPPORT

Model	V0	V1	V2	V3	V4	V5	V6
Weight (kg)	8,0	11,3	12,0	13,0	14,0	15,6	20,0
Minimum (mm)	1,200	1,800	2,000	2,400	2,700	3,400	4,500
Maximum (mm)	2,000	3,200	3,400	3,800	4,000	4,900	5,800
Internal Length (mm)	1,000	1,800	2,000	2,400	2,700	3,000	3,000
External Length (mm)	1,200	1,700	1,700	1,700	1,700	2,200	3,200
Allowance Load (kg)	3,600	1,700	1,600	1,400	1,300	1,200	800

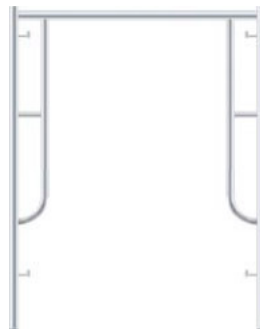
조립식 비계

FRAME SCAFFOLDING

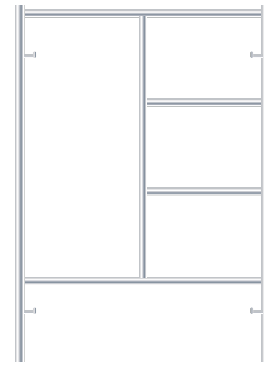
■ VERTICAL FRAME



TYPE A



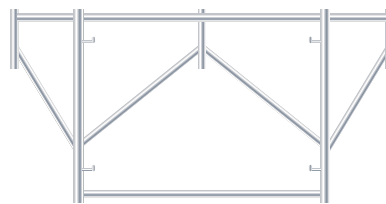
TYPE B



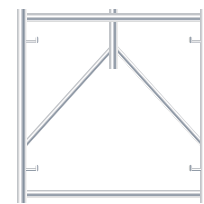
TYPE C



TYPE D



TYPE E



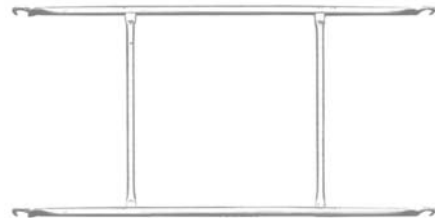
TYPE F

■ FRAME SCAFFOLDING

TYPE	TYPE A-D					TYPE E	TYPE F
Model	FS1219	FS1217	FS1215	FS1212	FS1209	FS1809	FS0909
Width (mm)	914 / 1,219 / 1,250					1,829	914
Length (mm)	1,900	1,700	1,530	1,200	900	900	900



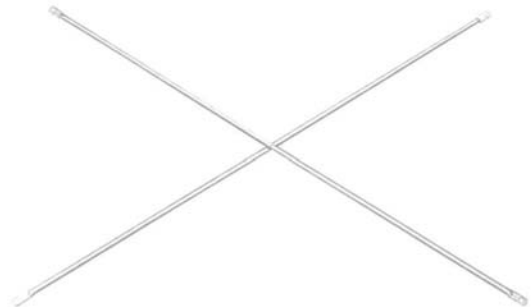
■ HORIZONTAL FRAME



■ TOE BOARD



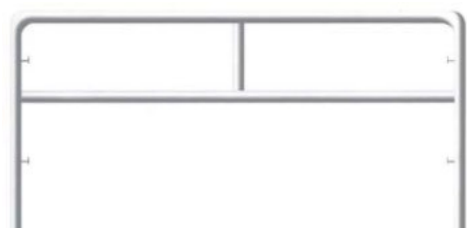
■ CROSS BRACE



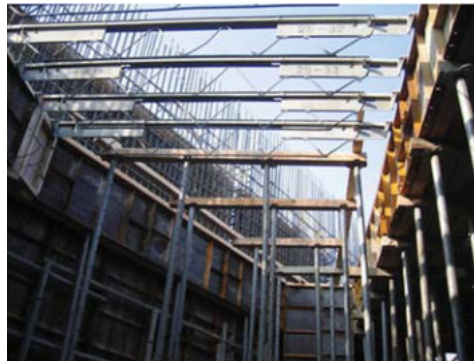
■ FRAME SCAFFOLDING

Model	Length (mm)	Width (mm)	Weight (kg)
HORIZONTAL FRAME	1,829	1,050	14,0
TOE BOARD	1,829	100	5,0
CROSS BRACE	1,829	1,219	3,9
SAFETY RAIL STAND - L	1,829	900	9,2
SAFETY RAIL STAND - S	1,219	900	6,0

■ SAFETY RAIL STAND



HORY-BEAM

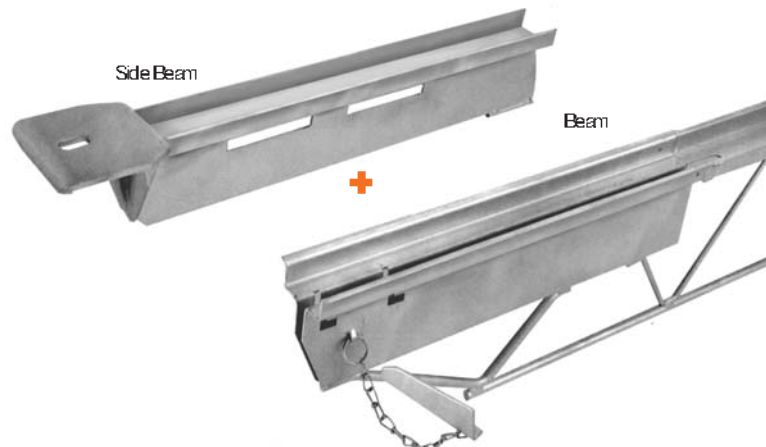


호리빔

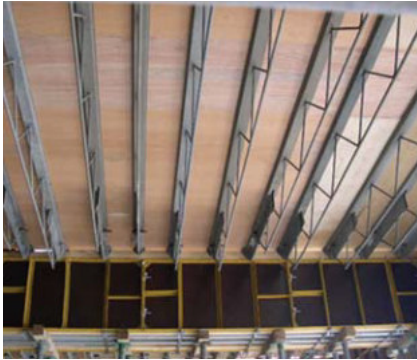
HORY-BEAM

Nonsupport form light weight temporary construction system without installing supporting post under the lower part of slab form.

슬래브 거푸집 하부에 동바리를 설치하지 않는 무지보공 경량 가설 시스템



HORY-BEAM



■ HORY BEAM

Model	Minimum (mm)	Maximum (mm)	Width (mm)
AX 11-14	1,100	1,450	163
AX 14-18	1,450	1,800	163
AX 18-25	1,800	2,500	272
AX 25-32	2,500	3,200	323
AX 32-39	3,200	3,900	324
AX 39-46	3,900	4,600	325
AX 46-53	4,600	5,300	326

AX 11-14



AX 14-18



AX 18-25



AX 25-32



AX 32-39



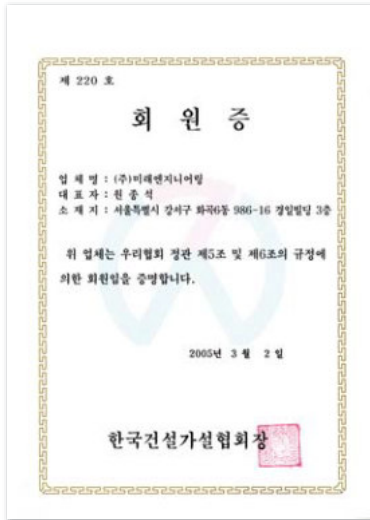
AX 39-46




AX 46-53



Patents & Certificates





With our best quality products, we can enrich your name and value in your fields.



Office Ha Noi

Address: No.19, team 17 Bac Lam, Phu Luong, Ha Dong Dist, HaNoi

Office: Near 207, Cong Dong La Khe Area, Le Van Luong Extending, Ha Dong Dist, HaNoi

Tel: 04 6181 5581 - 0934 650 886 (VietNam) - 036 3852 394 (Korea)

Email: thuleekl.co@gmail.com - kinhdoanhklvina@gmail.com

Website: www.klvina.com.vn

Office Ho Chi Minh

Address: Số 34, Đường 24A, Khu phố 5, Phường An Phú, Quận 2, Tp. Hồ Chí Minh

Office: 28/7 đường 11, Khu phố 4, Phường An Phú, Quận 2, TP Hồ Chí Minh

Tel: 0862515343 - 0914 709 933 (VietNam) - 0914 863 299 (Korea)

Email: kinhdoanhklvina@gmail.com

Website: klvina.com.vn